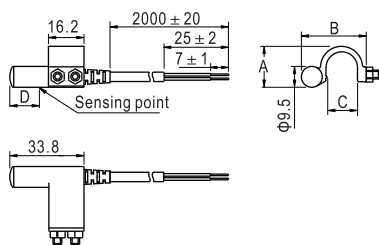


Sensor switch

CS1-B1~B8 Series



Dimensions



Type\Item	A	B	C	D
CS1-B1□	16.2	27.6	11	15.5
CS1-B2□	18.2	29.7	14	15.7
CS1-B3□	21.9	31.7	16.6	15.5
CS1-B4□	25.8	34.7	18	15.5
CS1-B5□	31.7	37.5	19	13
CS1-B6□	39.4	44.5	26	13
CS1-B7□	46.4	44.5	26	13
CS1-B8□	25	38.6	15	15.5

Specification

Item\Type	CS1-B□	CS1-B□X
Switch logic	STSP Normally opened type	
Switch type	Reed switch with contact	
Operating voltage(V)	5~240V AC/DC	
Max. Switching current(mA)	100	
Switching rating(W)	Max. 10	
Current consumption	No	
Voltage drop	2.5V Max. @100mA DC	
Cable	Φ 4.0,2C Gray oil resistant PVC (Flame retarded)	
Indicator	Red LED	No
Leakage current	No	
Sensitivity(Gauss)	60~75	
Max. Frequency(Hz)	200	
Shock(m/s ²)	300	
Vibration(m/s ²)	90	
Temperature range(°C) ①	-10~70	
Enclosure classification	IP67(NEMA6)	
Protection circuit	No	

① Note: Please contact us for high temperature resistant(125°C),low temperature resistant(-40~-25°C) and explosion-proof sensor switch.

Ordering code

CS1 B1 X 020

Number of sensor switch
CS1: Sensor switch

Connecting way ①

C08: M8 quick joint, length of wire is 150mm
C12: M12 quick joint, length of wire is 150mm
020: length of wire is 2m
030: length of wire is 3m
050: length of wire is 5m
100: length of wire is 10m

Specification of sensor switch

Specification	Product Series
B1: B1 type	Use for SU32~50, SI32(40), JSI32(40), SGC125
B2: B2 type	Use for SU63, SI50(63), JSI50(63)
B3: B3type	Use for SU80, SI80, JSI80
B4: B4 type	Use for SU100, SI100, JSI100
B5: B5 type	Use for SI125, JSI125, SGC250
B6: B6 type	Use for SI160
B7: B7 type	Use for SI200
B8: B8 type	Use for SGC160(200)

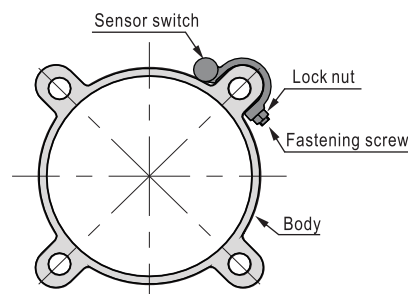
Model of sensor switch

Blank: two-line magnetic spring pipe with contact/normally opened
X: two-line magnetic spring pipe with contact, without indicator light/normally opened

① Note: The quick joint that is attached at the end of wire is three-needle-male joint-linear-rotary screw thread type. The female joint plug has to be ordered additionally. Please refer to P420 for the specific data.

Mounting

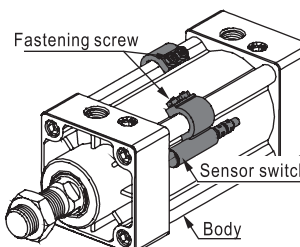
Installation example



Installation method

No additional accessories are necessary for the sensor switch of CS1-B□, CS1-B□Xseries. It can be directly fixed onto the cylinder, which is convenient and fast.

1. Loosen the clamping screw, snap the sensor switch on the outer surface of the cylinder, and adjust it to the proper position. Tighten the clamping screw and then tighten the lock nut to fix.



Sensor switch